



Memorial Park Cemetery

5668 Poplar Avenue, Memphis, TN 38119

Three Single Grave Spaces for Sale
\$5,500.00 each!



About this Cemetery Property

The most beautiful Cemetery in the Memphis Area & conveniently located at 5668 Poplar Av just West of Interstate 240. One of the most desirable original areas of the cemetery. [Similar spaces are currently for sale by the cemetery for \\$10,000 each.](#) Positioned in a peaceful, older section on a shady hillside amongst mature trees, they offer an expansive view of the area. Section J has easy access from the main Poplar AV & Yates Road entrances. [Just a short walk from the beautiful Crystal Shrine Grotto makes these sites ideal.](#) These are single depth spaces which may be converted to double depth with a separate fee to the cemetery. The spaces may also accommodate up to 3 urns. Additional fees to cemetery may be required. [Only \\$5,500/each or buy all 3 for \\$4000/each\(\\$12,000\).](#) Available for Immediate Need.

Please Call Seller Directly: 901-413-9999

Details of this Cemetery Property

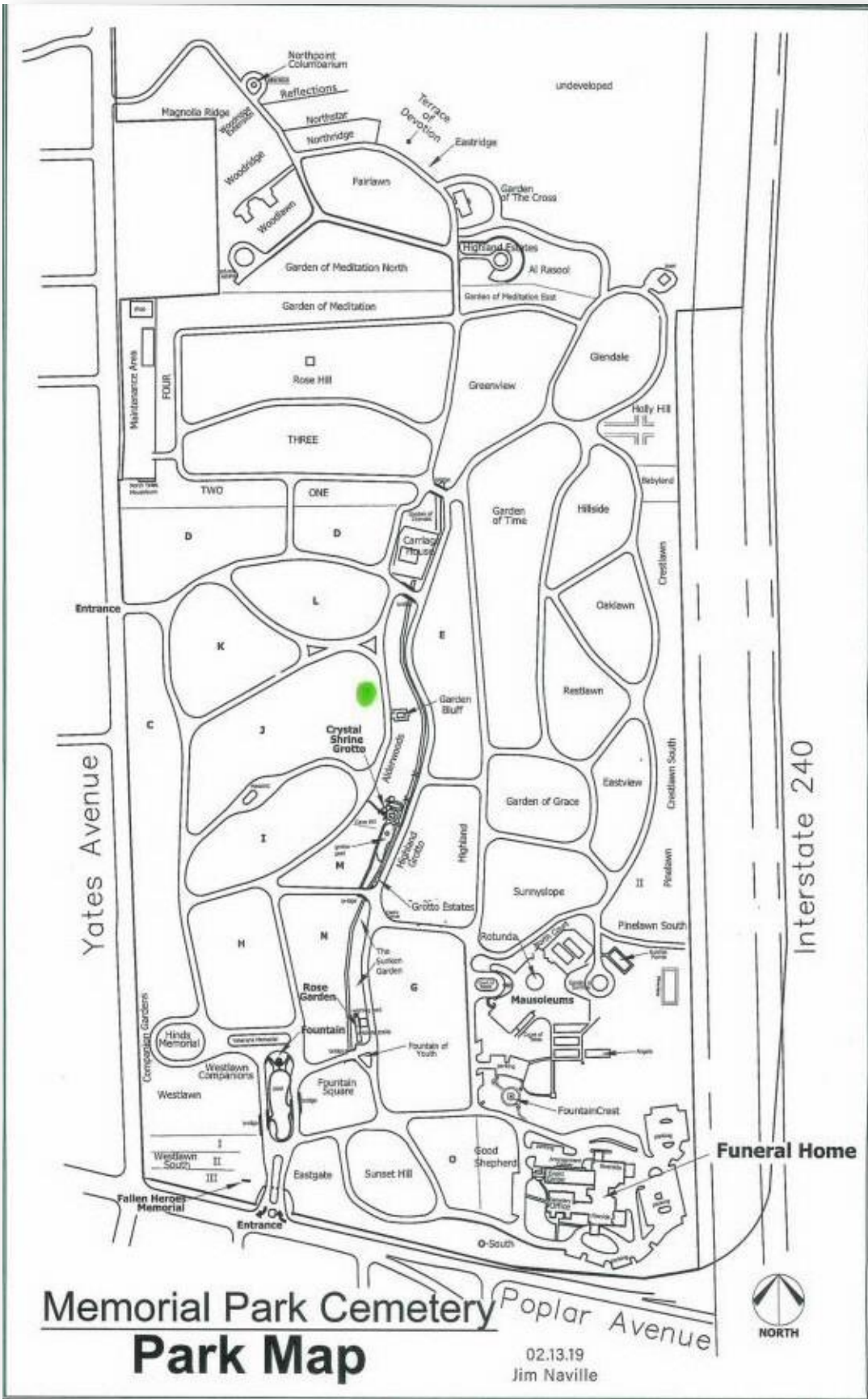
Listing ID: 24-0109-3 Property Type: Grave Spaces Quantity: (3) Singles Garden/Section: J
Block: B Lot: 34 Grave(s): 1, 2, 3

THE CEMETERY EXCHANGE LLC Hours of Operation - Monday thru Thursday 9:00am - 6:00pm EST
Friday 9:00am - 2:00pm EST 1-866-754-6573









\$ 9995 per space

2nd Rights

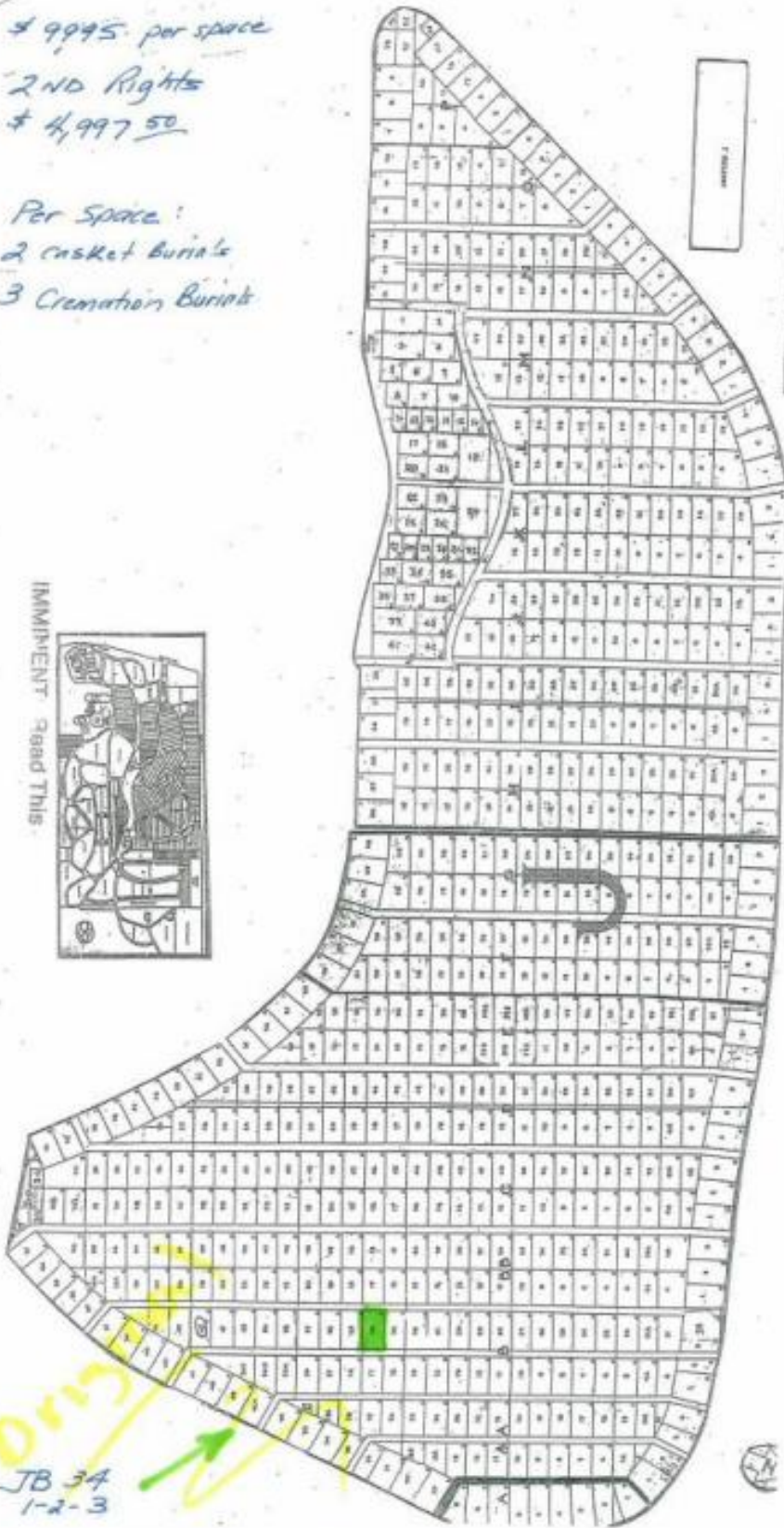
\$ 4,997.50

Per Space:

2 casket burials

3 Cremation Burials

IMMINENT ROAD THIS



Orin
JB 34
1-2-3

